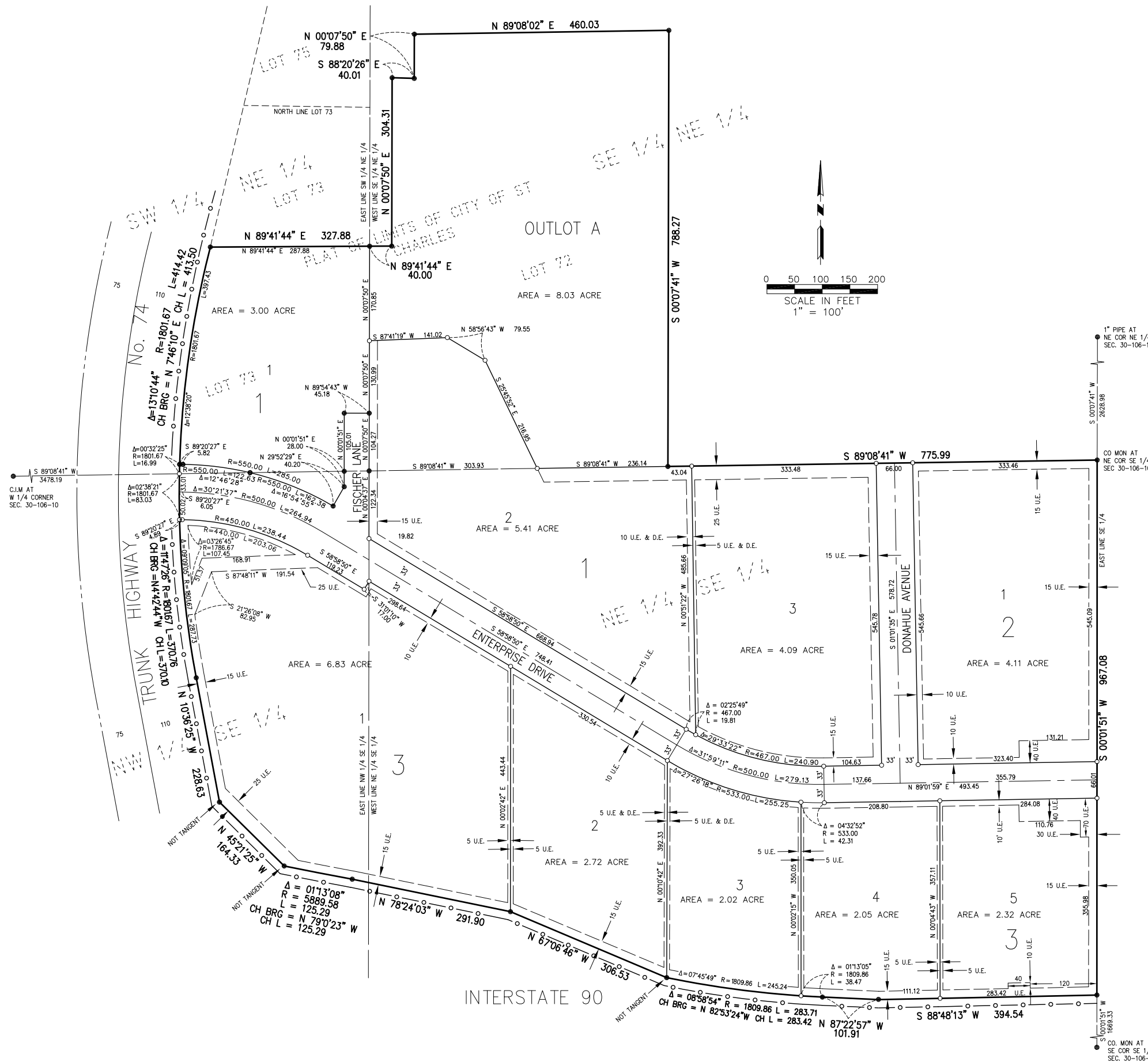


# CHATTANOOGA INNOVATION PARK



**BEARING SYSTEM USED:**

COORDINATES AND BEARINGS ARE BASED ON THE WINONA COUNTY COORDINATE SYSTEM NAD '83, ADJUSTED 1996. THE NORTHEAST CORNER OF SOUTHEAST QUARTER OF SECTION 30-110N-R10W HAVING A COORDINATE OF: N=139815.26 E=383399.85

**LEGEND**

- - FOUND IRON PIPE UNLESS OTHERWISE NOTED
- - DENOTES 1" Ø IRON PIPE WITH CAP #41814

- EASEMENT
- CENTERLINE
- RIGHT-OF-WAY
- - - EXISTING BOUNDARY
- CONTROLLED ACCESS

**UTILITY EASEMENT DEFINED**

An unobstructed easement for the construction and maintenance of all necessary overhead, underground or surface public utilities, including rights to conduct drainage and trimming on said easement.

**DRAINAGE EASEMENT DEFINED**

An unobstructed easement for the construction and maintenance of underground and surface drainage facilities and utility easement.

**CONTROLLED ACCESS DEFINED**

Ingress and egress to, from or across the abutting roadway is restricted by the road authority pursuant to Minnesota State Statute 160.08.

U.E. = UTILITY EASEMENT

D.E. = DRAINAGE EASEMENT

